

ONSTAGE INCLUDES

DAILY DANCE TECHNIQUE
taught by dancers of RKB

Ballet, Pointe
Modern, and
Specialty Classes
including:
Partnering, Stretch
Theatrics, Jazz
and Conditioning.

DAILY REHEARSAL in
choreography created
for students.

OS STUDENT PERFORMANCE
concludes the residency.

Open Rehearsals,
Meet the Company, and

REBECCA KELLY BALLET'S PUBLIC PERFORMANCE!



REGISTRATION

SPACE LIMITED—RESERVE YOUR PLACE EARLY.
Please keep this Onstage information. Return payment
portion form only, with payment. Major credit cards, or check
payable to Rebecca Kelly Ballet. Tel. 212-431-8489 through
June 6; then, 518-293-7608. An orientation package will be
mailed after registration is complete. *Some financial aid is
available. Email for information.*

TICKETS TO PERFORMANCES

RKB's public performance on Thurs, Aug 2, 8pm.
One complimentary student and one complimentary adult
ticket is included in Onstage or Intern tuition.

Tickets to RKB's performance
must be reserved and picked up
prior at the LPCA Box Office
518-523-2512.

**ONSTAGE Repertory
Performance Fri, 8/3, 10:30am.**
A summer highlight! ONE
complimentary ticket is included
with OnStage enrollment. Open
seating. First come—First served.
Suitable for ages 2yrs -102
years!

**Additional OnStage tickets are
\$10 at the door.** Children under
8 years are FREE.



Performance Photos: Todd Bissonette



Teacher Training / Professional Development available.

Dance Master Classes, 5-day Workshop Intensives, or Visiting
Artist monthly series taught in your community by members of
the Company throughout the year. Easy to arrange!

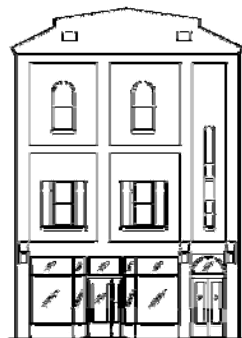
LPCA OFFICE AND BOX OFFICE 518-523-2512
17 Algonquin Drive and Saranac Avenue.

HOUSING www.lakeplacid.com/flash/wheretostay/z-wheretostay.htm.

THANK YOU! RKB's upstate programs have been made possible
with support from an Arts Council for the Northern Adirondacks CAP
grant, the Lake Placid Center for the Arts, the Lake Placid Education
Fund, Community Bank, and Stewart's Shops.

REBECCA KELLY BALLET

Offers simply *the best* blend of modern and contemporary
ballet. Seen on PBS Mountain Lake, Art Express, heard on
NCPR, and featured in profiles in *Pointe Magazine*, Kelly
reveals compelling images which easily captivate the audience.
2012 marks the 25th year that RKB has provided cultural
programs to the North Country including Lake Placid, Jay,
Saranac Lake, Tupper Lake, Ticonderoga, North Creek,
Potsdam, Watertown, Plattsburgh and Essex, and Au Sable
Forks, that nurture an appreciation for the beauty of the arts,
and provide a hands-on experience, thoroughly engaging
participants at every age.



TAHAWUS LODGE CENTER

Do you know about TLC
in Au Sable Forks?
TahawusLodgeCenter.org

At ease in classical and
contemporary styles
The New York Times

Ballets that explode into
luscious weddings of
music and movement
BackStage

RKBallet1@verizon.net
RebeccaKellyBallet.org

Rebecca Kelly Ballet
579 Broadway, 4B
New York, NY 10012
212-431-8489; C: 646-734-7151

Summer address
2876 Silver Lake Rd
Saranac, NY 12981
518-293-7608

BALLET

Rebecca Kelly

ONSTAGE 2012



NEW YORK CITY
TO THE ADIRONDACKS

SUMMER DANCE
PERFORMANCE CAMP
JULY 23-AUG 3

AT THE LAKE PLACID CENTER
FOR THE ARTS
LAKE PLACID, NEW YORK

EARLY BIRD DISCOUNT
APPLIES WHEN YOU
REGISTER AND PAY BY 5/1

Classical and
Contemporary



REBECCA KELLY BALLET — ONSTAGE REGISTRATION

These Early Bird prices apply when you Register by May 1. \$625-INTERN; \$430 - OS Plus; \$325 - ONSTAGE

DATE: _____ 2012

Parent's Name:

Street:

Town, State, Zip:

For OS announcements **Print E-mail:**

Tel:

- INTERN PROGRAM, Full day _____ 2 wks \$675 (Full day: RKB performance opener, Thurs, 8/2, 8pm; OS performance Fri, 8/3, 2+ classes / day)
 ONSTAGE PLUS, Half & 2 Full days _____ 2 wks \$450 (1/2 days + 2 full days: RKB performance opener, Thurs, 8/2, 8pm; OS performance Fri, 8/3)
 ONSTAGE BASICS, Half day _____ 2 wks \$335 (1/2 days: RKB performance opener, Thurs, 8/2, 8pm; OnStage performance Fri, 8/3)
 KIDS CO-MOTION III Mo, Tu, Th, Fri* _____ 6 60-minute classes (Child is dropped off; Plus Onstage performance 8/3* at 10:30am) \$150
 KIDS CO-MOTION II Mo, Tu, Th _____ 6 45-minute classes (Child is dropped off; Open Studio with parents attending at last class) \$115
 KIDS CO-MOTION I Mo, Tu, Th _____ 6 45-minute classes \$70; _____ 3 classes \$45 (parent and child); _____ Single class drop-ins \$15

Student Name _____ Birth Date _____ Age Now _____ OnStage (# yrs) _____ Dance Experience _____

- 1)
- 2)

REGISTRATION: Check or Credit Card total payment \$_____ Enclosed. IF registration payment is *postmarked* by May 1, use Early Bird price!
REBECCA KELLY BALLET, 579 Broadway 4B, New York, NY 10012. After June 6, mail to 2876 Silver Lake Rd, Saranac NY, 12981.

I am using _____ AMEX _____ MasterCard _____ VISA.

Card EXP. Date _____ / _____

_____ CREDIT CARD NUMBER

VIN Code _____



Return this portion only, above line: **Onstage Registration and Payment Form**



Performance Photos: Todd Bissonette, Other: Appleby, Heather Cleveland.

REBECCA KELLY BALLET ONSTAGE in Lake Placid



in the Adirondack Mountains since 1990. Experience the world of contemporary dance, learn from RKB's inspiring professionals, perform on stage! A lively 2-week half or full-day camp challenges and encourages the beginner to advanced dance student. During daily training and rehearsal, students learn dances specially created for them by NY choreographer Rebecca Kelly. Activities take place at the beautiful Lake Placid Center for the Arts which culminate in the Onstage Repertory Performance.



DANCE TRAINING AND PERFORMANCE

ignite the imagination, provide a physical outlet, and encourage students to develop skills in a climate of friendship, good will, and humor. RKB expands cultural horizons with its emphasis on introducing the vivid music of different cultures. Onstage students develop skills of coordination and grace, discipline, cooperation, and focus, — good for school, good for life.

While in residence RKB develops vibrant new ballets, holds dance classes, open rehearsals, and a public performance.

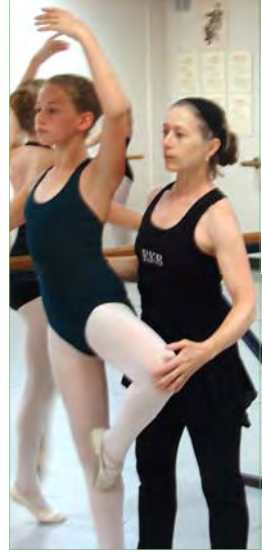
THE PROGRAM JULY 23-AUG 3, 2012 PURE FUN TO PRE-PROFESSIONAL

ONSTAGE - The INTERN PROGRAM, 13-20 years A rigorous program for students over 13 years (modern or ballet), who have had a minimum of 3 years of dance training, or age 14 *and* 3 past Onstage experiences, are eligible for the *intensive* Intern program, 9am to 3:30pm. Activities include the daily ONSTAGE morning regimen, afternoons spent in choreography tailored by Rebecca Kelly, ballet technique, stretch, and pointe, modern or specialty classes, stage craft, and opportunities to observe rehearsals, and a concluding performance.

ONSTAGE PLUS 12-14 yrs

Thinking about being an Intern?

Try Onstage Plus! In addition to the morning Onstage schedule, *Plus* students join interns for one ballet class each week and 2 long days, participating in a specialty class and observing RKB Company rehearsal in the afternoon. RKB recommends 2 years at Plus level before acceptance to the Intern program.



ONSTAGE BASICS 6+ to 14 yrs

No dance experience? Just get started! Participate in 2 weeks, half-days of activities, including two performances. Explore movement, develop dance technique while learning choreography, 9am-12noon daily (except as noted). Students are divided into groups according to the artistic director's discretion. Note: Youngest students must have completed Kindergarten.

ALL ONSTAGE STUDENTS PERFORM

in the large group choreography opening the Rebecca Kelly Ballet's public program Thurs, Aug 2, 8pm and the closing Onstage presentation Friday, Aug 3, 10:30am.

KIDS CO-MOTION™, 3 LEVELS, 18mo-3.5yrs; 3.5-4.5;

4.5-6yrs, directed by Craig Brashear. Creative movement classes involve the youngest members of the community *with* parents in Level I; *without* parents in Levels 2 and 3. KCM builds movement vocabulary through choreography and song, featuring a range of international music from classical, folk, to rock 'n roll. Dads and Grand-parents are most welcome! KCM III students perform with their instructor in the Friday am OnStage Performance.